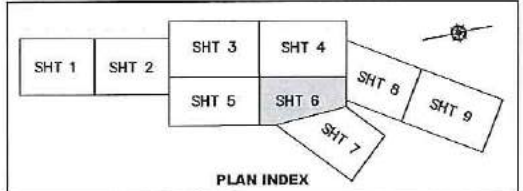


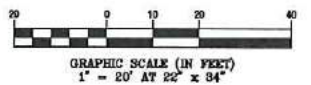
- LEGEND:**
-  ITEM 608.010200NC
COLORED, PATTERNED CONCRETE SIDEWALK
 -  ITEM 608.07
BRICK PAVED SIDEWALK
(OPTIONAL CONCRETE SETTING BED)
 -  ITEM 608.110300NC
BLUESTONE SIDEWALK

AREA 8
\$ 5,000

TOTAL = \$ 5,000



DESIGNED BY: T. LEWIS									
DRAWN BY: T. LEWIS									
CHECKED BY: J. ANDERSON	NO.	DATE				DRWN	CHKD	APPVD	
REVISIONS									



UNAUTHORIZED ALTERATIONS AND ADDITIONS TO THIS DRAWING IS A VIOLATION OF SECTION 7209 (2) OF THE NEW YORK STATE EDUCATION LAW



WSP
555 Pleasantville Road
Briarcliff Manor, NY 10510
(914) 747-1120
www.wspgroup.com/usa

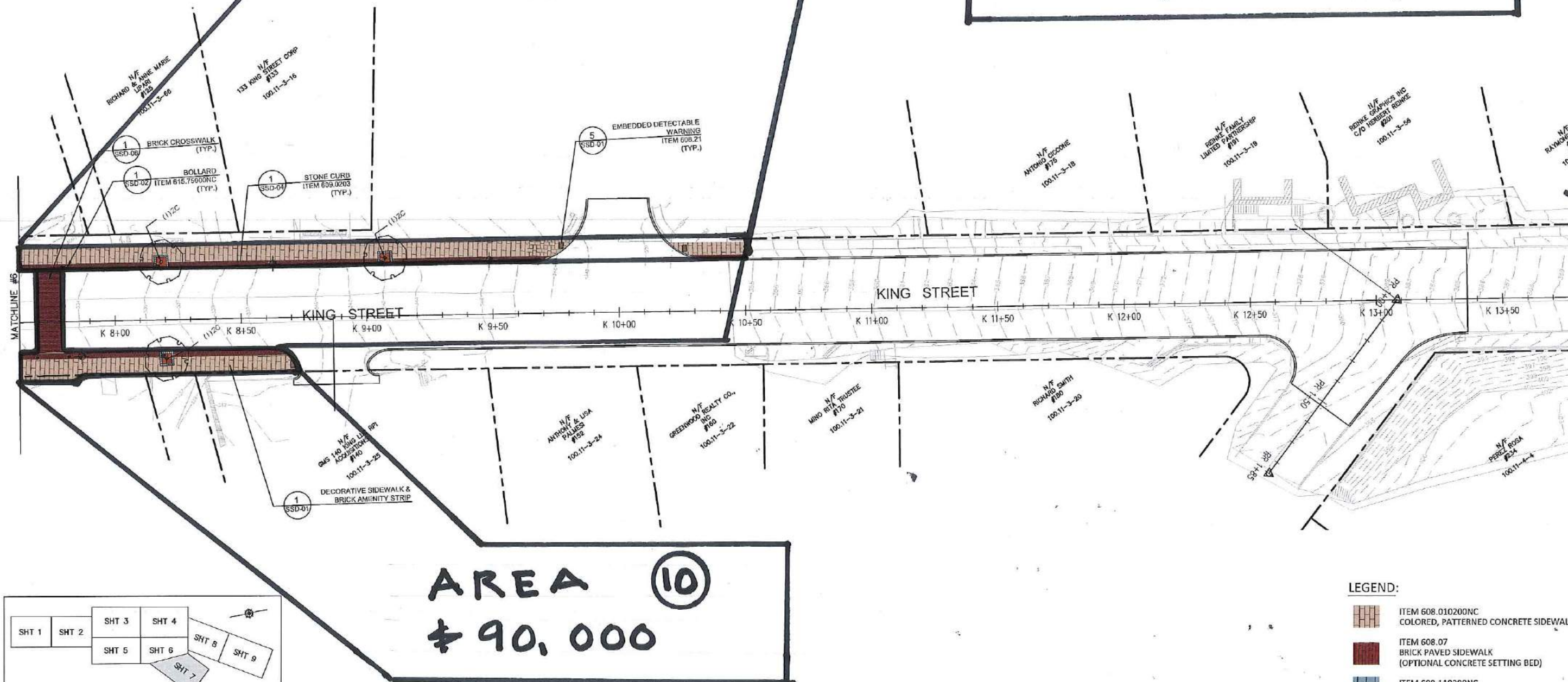
STREETSCAPE & INFRASTRUCTURE IMPROVEMENT PROJECT
HAMLET OF CHAPPAQUA, TOWN OF NEW CASTLE
WESTCHESTER COUNTY, NEW YORK

FINAL DESIGN SUBMISSION
STREETSCAPE PLANS - 6

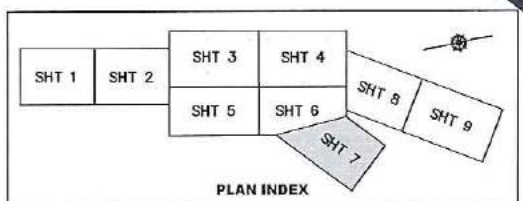
PROJECT NO.	1400042
SUBMISSION:	FINAL
DATE	01/27/17
DRAWING NO.	SSP-06
SHEET	91 OF 210

AREA 9
\$ 195,000

TOTAL = \$ 285,000

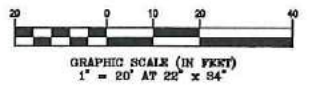


AREA 10
\$ 90,000



- LEGEND:**
-  ITEM 608.010200NC
COLORED, PATTERNED CONCRETE SIDEWALK
 -  ITEM 608.07
BRICK PAVED SIDEWALK
(OPTIONAL CONCRETE SETTING BED)
 -  ITEM 608.110300NC
BLUESTONE SIDEWALK

DESIGNED BY: T. LEWIS								
DRAWN BY: T. LEWIS								
CHECKED BY: J. ANDERSON	NO.	DATE		DRWN	CHKD	APPVD		
REVISIONS								



UNAUTHORIZED ALTERATIONS AND ADDITIONS TO THIS DRAWING IS A VIOLATION OF SECTION 7209 (2) OF THE NEW YORK STATE EDUCATION LAW

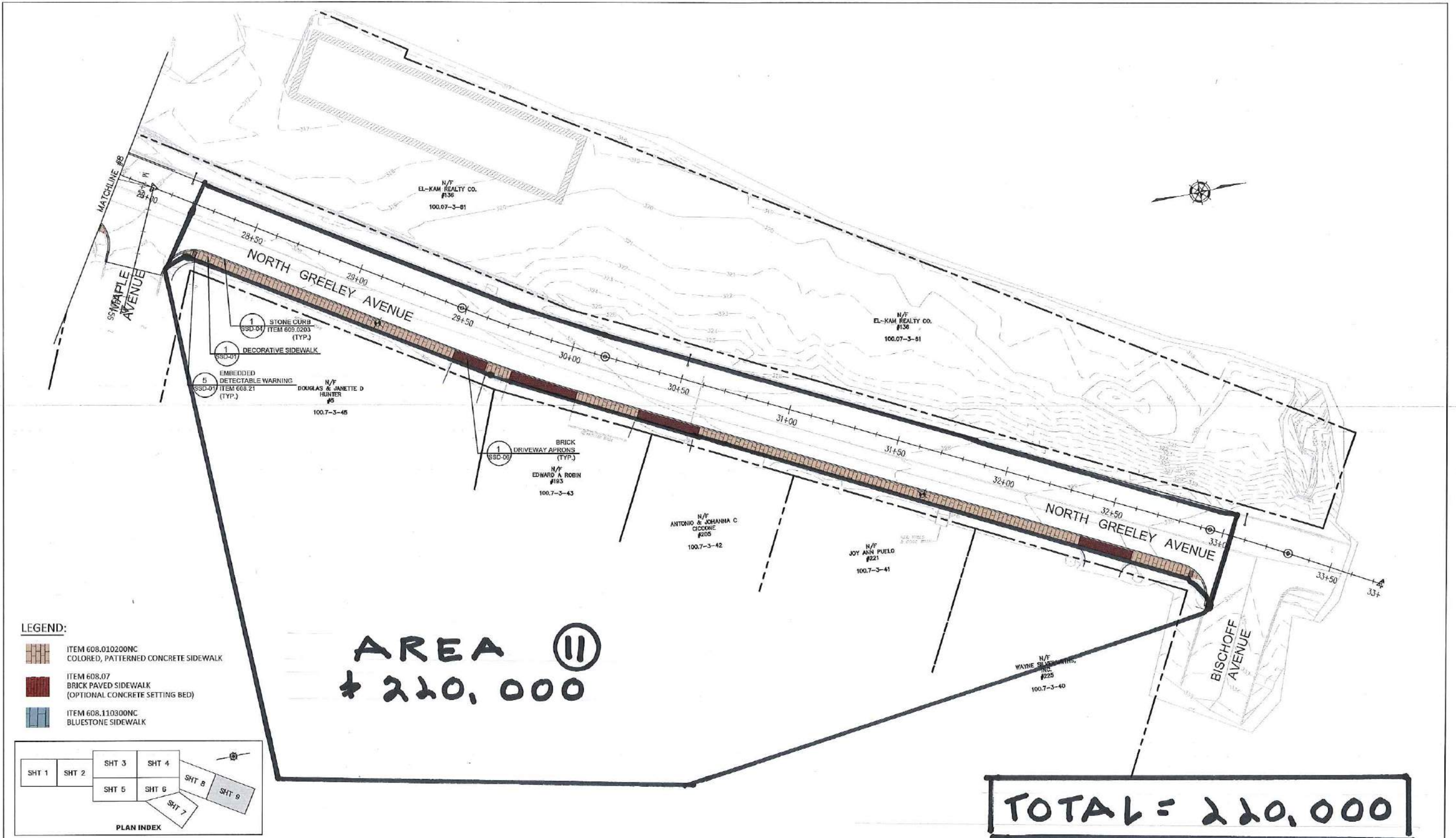


WSP
 555 Pleasantville Road
 Briarcliff Manor, NY 10510
 (914) 747-1120
 www.wspgroup.com/usa

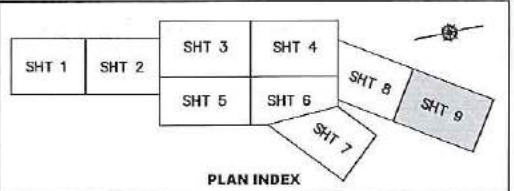
STREETSCAPE & INFRASTRUCTURE IMPROVEMENT PROJECT
HAMLET OF CHAPPAQUA, TOWN OF NEW CASTLE
WESTCHESTER COUNTY, NEW YORK

FINAL DESIGN SUBMISSION
STREETSCAPE PLANS - 7

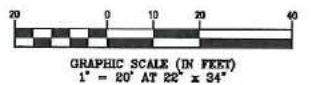
PROJECT NO. SUBMISSION:	1400042 FINAL
DATE	01/27/17
DRAWING NO.	SSP-07
SHEET	92 OF 210



- LEGEND:**
-  ITEM 608.010200NC
COLORED, PATTERNED CONCRETE SIDEWALK
 -  ITEM 608.07
BRICK PAVED SIDEWALK
(OPTIONAL CONCRETE SETTING BED)
 -  ITEM 608.110300NC
BLUESTONE SIDEWALK



DESIGNED BY: T. LEWIS					
DRAWN BY: T. LEWIS					
CHECKED BY: J. ANDERSON	NO.	DATE	DRWN	CHKD	APPVD
					REVISIONS



UNAUTHORIZED ALTERATIONS AND ADDITIONS TO THIS DRAWING IS A VIOLATION OF SECTION 7209 (2) OF THE NEW YORK STATE EDUCATION LAW



WSP
 555 Pleasantville Road
 Briarcliff Manor, NY 10510
 (914) 747-1120
 www.wspgroup.com/usa

STREETSCAPE & INFRASTRUCTURE IMPROVEMENT PROJECT HAMLET OF CHAPPAQUA, TOWN OF NEW CASTLE WESTCHESTER COUNTY, NEW YORK	PROJECT NO. 1400042
	SUBMISSION: FINAL
	DATE 01/27/17
FINAL DESIGN SUBMISSION STREETSCAPE PLANS - 9	
DRAWING NO. SSP-09 SHEET 94 OF 210	